



Kenstar Cyclone

(prices correct as of March 2011)

(please see parts diagram on page 2)

Minimum Order £10

(all prices exclude P&P and VAT)

To order please call
our experts on 020 8346 6000.

Ice Chamber Lid
Ref - CYC1
Price - £14.56



Top Panel
Ref - CYC2
Price - £93.60



Logo Plate
Ref - CYC3
Price - £8.85



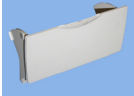
Horizontal Louver
Ref - CYC4
Price - £5.88



Front Panel
Ref - CYC5
Price - £83.20



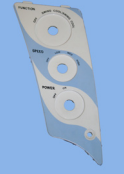
Filler Flap
Ref - CYC6
Price - £9.75



Switch Set
Ref - CYC7
Price - £29.25



Swich Plate
Ref - CYC8
Price - £9.10



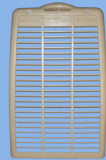
Knob Set
Ref - CYC9
Price - £19.70



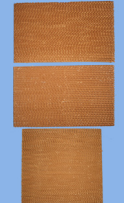
Latch (Pair)
Ref - CYC10
Price - £7.80



Side Outer Panel
Ref - CYC11
Price - £37.70



Cooling Pad - Set
Ref - CYC12
Price - £107.90



Side Inner Panel
Ref - CYC13
Price - £41.60



Water Pump
Ref - CYC14
Price - £93.60



Water Reservoir
Ref - CYC15
Price - £83.20



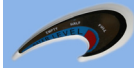
Float Valve
Ref - CYC16
Price - £17.88



Drain Plug
Ref - CYC17
Price - £2.53



Water Level Window
Ref - CYC18
Price - £4.15



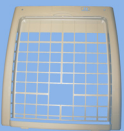
Ball Float
Ref - CYC19
Price - £8.84



Knob Air Flow
Ref - CYC20
Price - £6.33



Rear Inner Panel
Ref - CYC21
Price - £46.80



Rear Outer Panel
Ref - CYC22
Price - £42.90



Fan Blade
Ref - CYC23
Price - £52.00



Fan Motor
Ref - CYC24
Price - £162.50



Vertical Louver
Ref - CYC25
Price - £9.75



Swing Motor
Ref - CYC26
Price - £32.50



Top Panel Bracket
Ref - CYC27
Price - £6.24



Trolley
Ref - CYC28
Price - £62.40



