

**Airrex HSC 2500**  
(prices correct as of March 2017)  
(please see parts diagram on page 2)

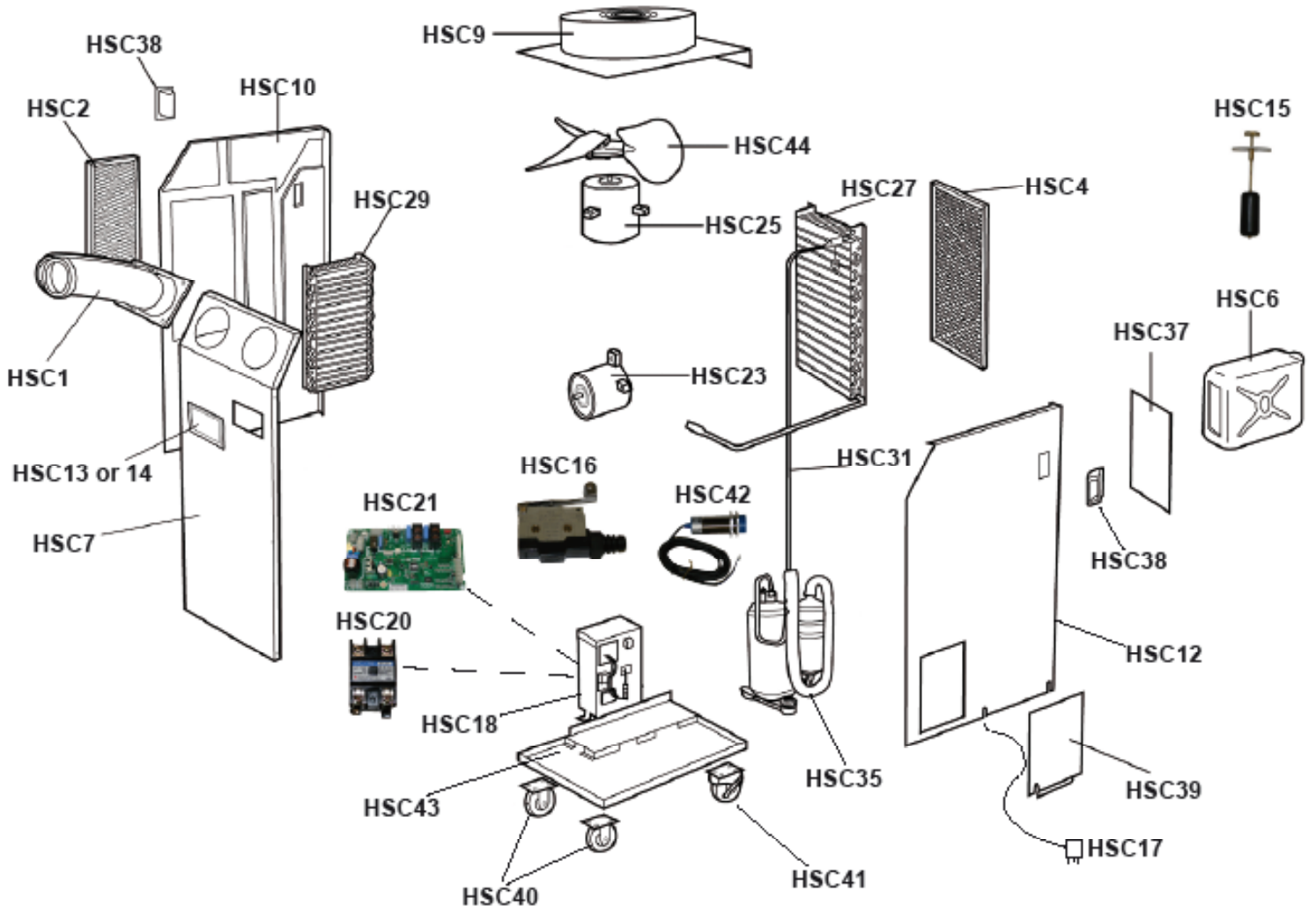
**Minimum Order £10**  
(all prices exclude delivery and VAT)

To order please call  
our experts on 020 8346 6000.



 <p><b>Reducer Ducting</b> Ref - HSRDI 3 Retail - £99.00</p> <p>Notes: 3 Metres Long</p>	 <p>Non-Insulated Extension 12" Ref - HSE 3 Retail - £53.00</p> <p>Notes: 3 Metres Long</p>	 <p>Insulated Extension 12" Ref - HSIE3 Retail - £88.00</p> <p>Notes: 3 Metres Long</p>	 <p>Cool Arm Extension Ref - HSCH 3 Retail - £29.50</p> <p>Notes: 3 Metres Long</p>
 <p><b>Cooling Arm</b> Ref - HSC 1 Retail - £42.00</p>	 <p><b>Filter Evaporator</b> Ref - HSC 2 Retail - £45.15</p>	 <p><b>Filter Condensor</b> Ref - HSC 4 Retail - £49.97</p>	 <p><b>Condensate Pump</b> Ref - HSC 5 Retail - £114.95</p>
 <p><b>Water Tank</b> Ref - HSC 6 Retail - £41.50</p>	 <p><b>Front Panel</b> Ref - HSC 7a Retail - £99.70</p> <p>Notes: For use with HSC13 Single temperature Display</p>	 <p><b>Front Panel</b> Ref - HSC 7b Retail - £99.70</p> <p>Notes: For use with HSC14 Dual temperature Display</p>	 <p><b>Front Panel</b> Ref - HSC 7c Retail - £99.70</p> <p>Notes: For use with HSC14 Dual temperature Display with cut out window.</p>
 <p><b>Top Panel</b> Ref - HSC 9 Retail - £75.50</p>	 <p>Panel Side (Evaporator) Ref - HSC 10 Retail - £84.50</p>	 <p>Panel Side (Power) Ref - HSC 12 Retail - £99.70</p>	 <p><b>Controller</b> Ref - HSC 13 Retail - £67.05</p> <p>Notes: Single temperature Display</p>
 <p><b>Controller</b> Ref - HSC 14 Retail - £74.50</p> <p>Notes: Dual temperature Display</p>	 <p><b>Float Water Tank</b> Ref - HSC 15 Retail - £16.20</p>	 <p><b>Float Water Tank</b> Ref - HSC 15a Retail - £16.20</p>	 <p><b>Switch Tank Locator</b> Ref - HSC 16 Retail - £36.20</p>
 <p><b>Power Cord</b> Ref - HSC 17 Retail - £11.30</p>	 <p><b>Power Box</b> Ref - HSC 18 Retail - £189.06</p> <p>Notes: Discontinued Item</p>	 <p><b>Contactor</b> Ref - HSC 20 Retail - £39.20</p>	 <p><b>PCB</b> Ref - HSC 21 Retail - £137.60</p>
 <p><b>Motor Cold Air</b> Ref - HSC 23 Retail - £173.30</p>	 <p><b>Motor Hot Air</b> Ref - HSC 25 Retail - £171.60</p>	 <p><b>Condensor</b> Ref - HSC 27 Retail - £233.30</p>	 <p><b>Evaporator</b> Ref - HSC 29 Retail - £117.86</p>
 <p><b>Tube Suction</b> Ref - HSC 31 Retail - £78.14</p>	 <p><b>Tube Discharge</b> Ref - HSC 33 Retail - £26.66</p>	 <p><b>Compressor</b> Ref - HSC 35 Retail - £607.99</p>	 <p><b>Cover Compressor</b> Ref - HSC 37 Retail - £21.00</p>
 <p><b>Handle (pair)</b> Ref - HSC 38 Retail - £13.60</p>	 <p><b>Cover Power Box</b> Ref - HSC 39 Retail - £21.30</p>	 <p><b>Castor Non-Locking</b> Ref - HSC 40 Retail - £12.80</p>	 <p><b>Castor Locking</b> Ref - HSC 41 Retail - £20.00</p>
 <p><b>Water Level Sensor</b> Ref - HSC 42 Retail - £48.30</p>	 <p><b>Floor Assembly</b> Ref - HSC 43 Retail - £96.00</p> <p>Notes: Discontinued Item</p>	 <p><b>Fan Hot Air</b> Ref - HSC 44 Retail - £45.20</p>	 <p><b>Cone Metal</b> Ref - HSC 45 Retail - £58.00</p> <p>Notes: Discontinued Item</p>
 <p><b>5m Extension</b> Ref - HSC 46 Retail - £14.95</p> <p>Notes: Heavy Duty Cord</p>	 <p><b>10m Extension</b> Ref - HSC 47 Retail - £24.95</p> <p>Notes: Heavy Duty Cord</p>	 <p>Float level switch sensor Ref - HSC 48 Retail - £10.95</p> <p>Notes: Magnet Operated</p>	 <p>Float level switch sensor Ref - HSC 48a Retail - £11.00</p> <p>Notes: Button Operated</p>
 <p><b>Switch Spot-Room</b> Ref - HSC 49 Retail - £11.97</p>	 <p><b>Temperature Sensor</b> Ref - HSC 50 Retail - £15.12</p>	 <p><b>Drip Tray Condenser</b> Ref - HSC 51 Retail - £15.12</p>	 <p><b>Power Box Cover and Cable Tidy</b> Ref - HSC 52 Retail - £24.40</p>

# Airrex HSC 2500 Parts Diagram



<b>HSRD13</b> Reducer Hose	<b>HSIE3</b> 3m Extension (Insulated)	<b>HSE3</b> 3m Extension (Non-Insulated)	<b>HSCH 3</b> 3m Cooling Extension	<b>HSC 46</b> 5m Industrial Power Cord	<b>HSC 47</b> 10m Industrial Power Cord	<b>HSC 45</b> Metal Reducer	<b>HSC 5</b> Condensate Pump